

Creating Hot Folders

PRODUCTS USED

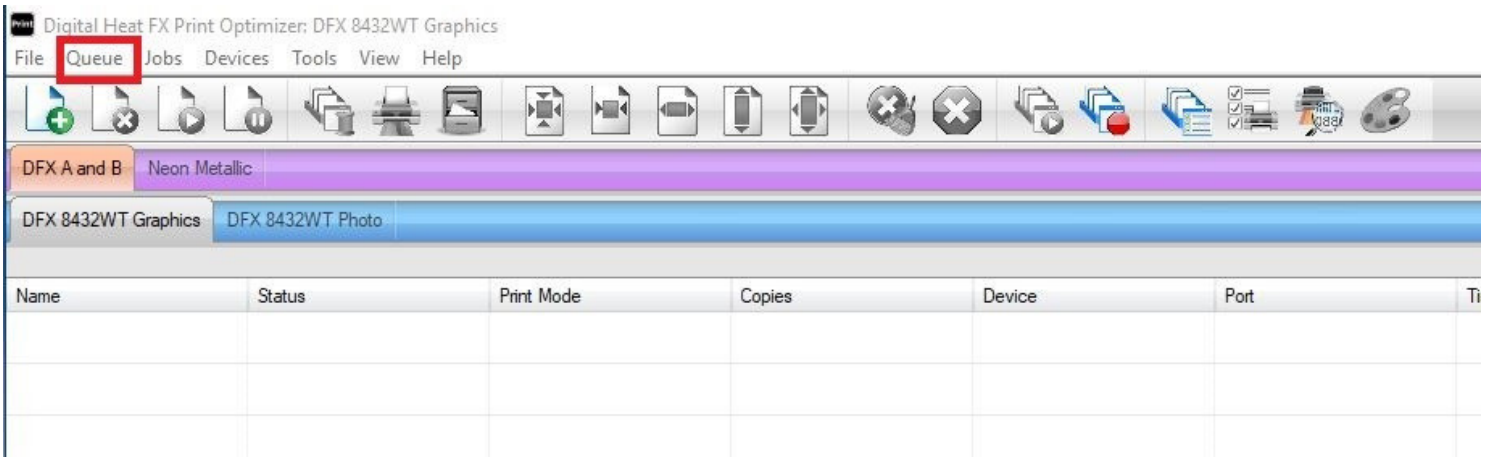
DFX Print Optimizer

For DFX Print Optimizer

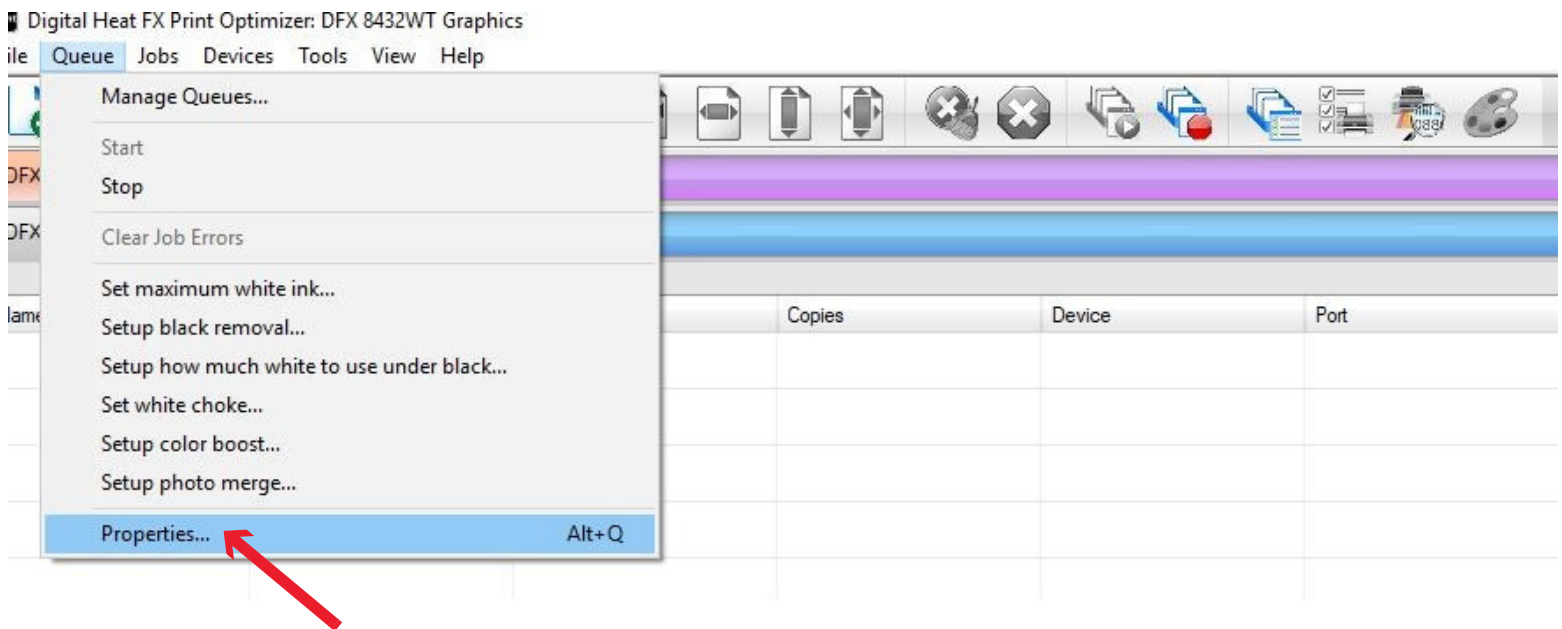
The Print Optimizer software gives you the capability to create a "Hot Folder" to save your designs into. This Hot Folder is linked to any Queue of your choosing in the Optimizer software. This option is especially helpful if you are using two separate computers. One for designing your graphics, and one with Print Optimizer installed on it. Simply save a copy of your finished design to the Hot Folder, and the file will automatically appear in the Print Optimizer software.

How to create a Hot Folder:

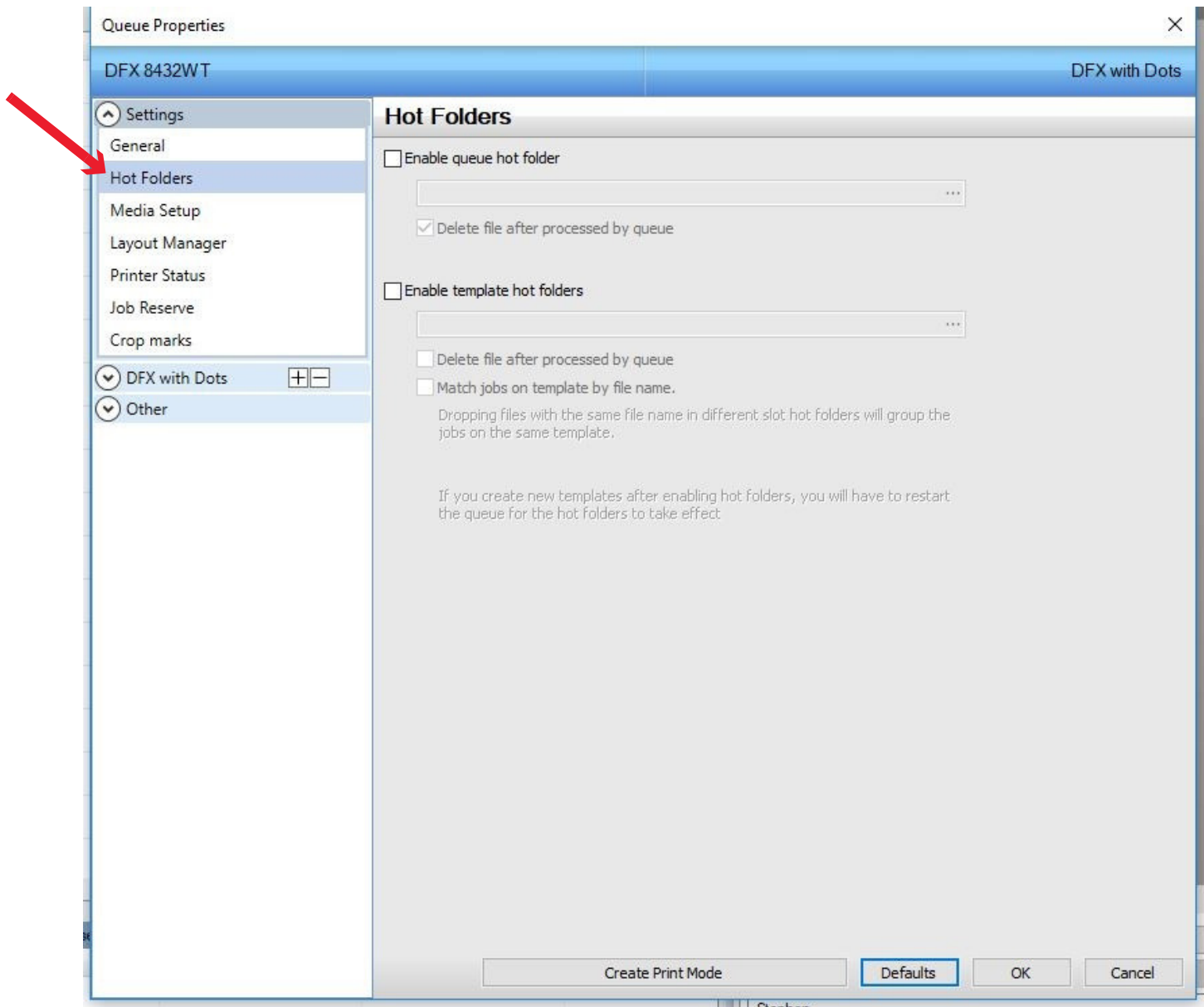
1. Create a new folder, with the name of your choosing, to a shared drive that is visible on both computers.
2. Copy and paste your finished design into this new folder.
3. Open up your Print Optimizer software. Click on the Queue that you want to set up the Hot Folder for. Then on the top of the page, click on "Queue".



4. Click on "Properties..." at the bottom of the list.

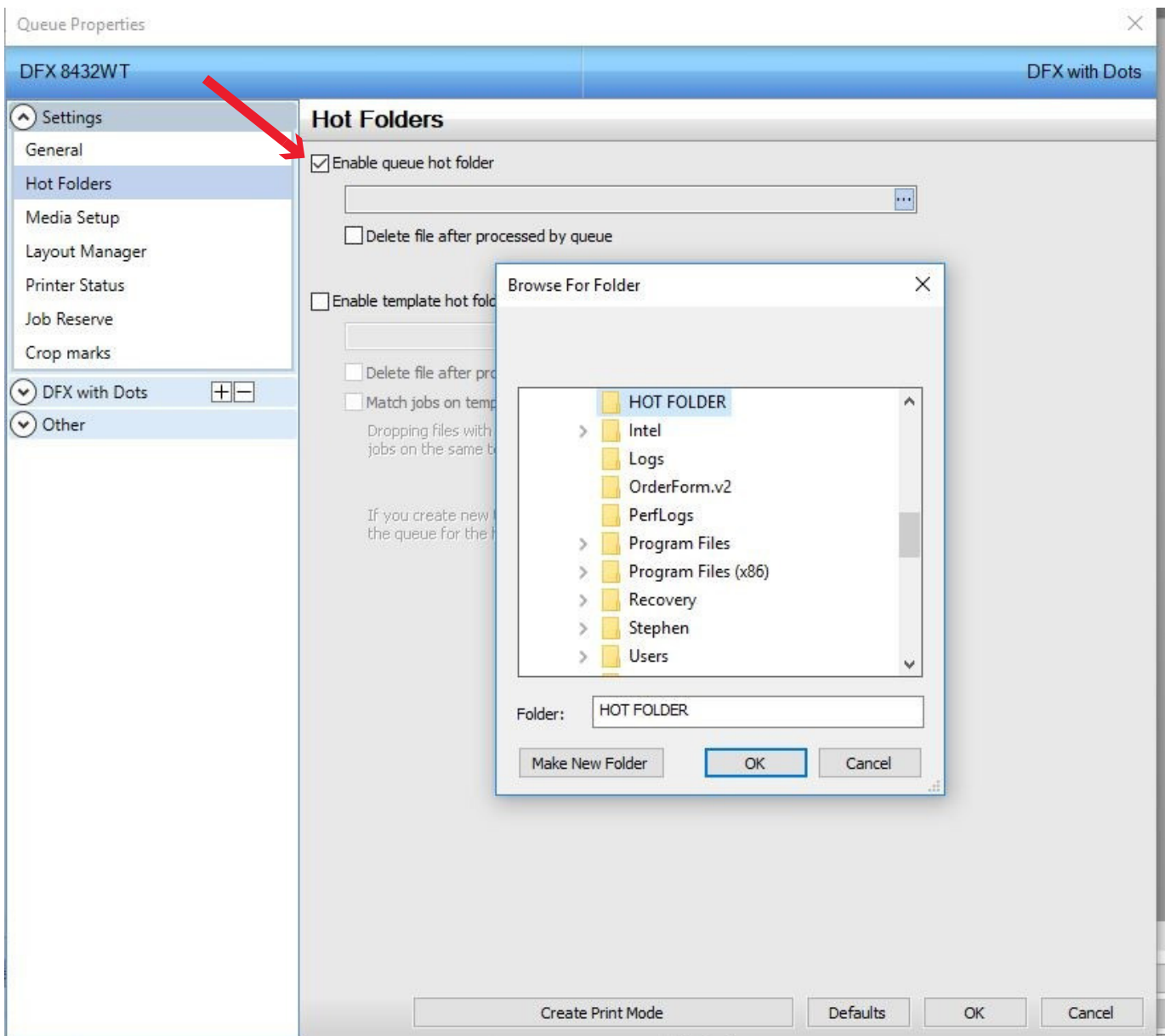


5. When the Queue Properties window appears, locate "Hot Folders" on the left-hand side under the Settings category. Click on "Hot Folders".



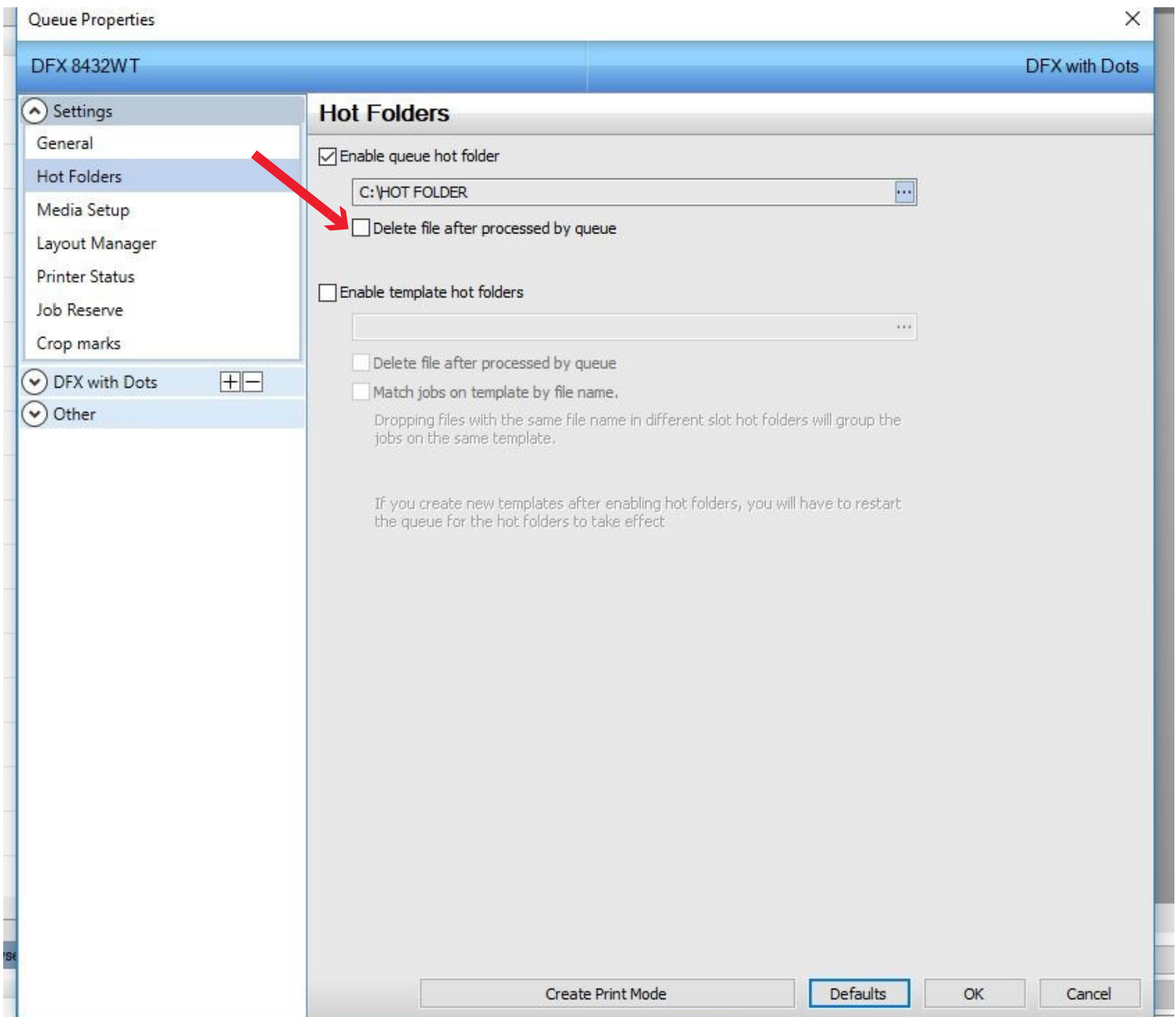
6. On the Hot Folders screen, click on the white box next to "Enable queue hot folder" to enable this setting and add a check mark to the option.

7. Once the "Browse For Folder" pop-up appears, locate the Hot Folder you created, click on it, and then press "OK".



8. Your Hot Folder is now set up and ready to use.

At this time, you can also enable the option to delete the file from the Hot Folder after it has been processed by the Print Optimizer software.



9. When your Hot Folder is set up in the Print Optimizer, save a copy of your designed file into that Hot Folder. Then, when you open Print Optimizer, your file will appear in the Queue.

For additional support, please contact support@coldesi.com or open a ticket at <https://support.coldesi.com/open-a-ticket/>.